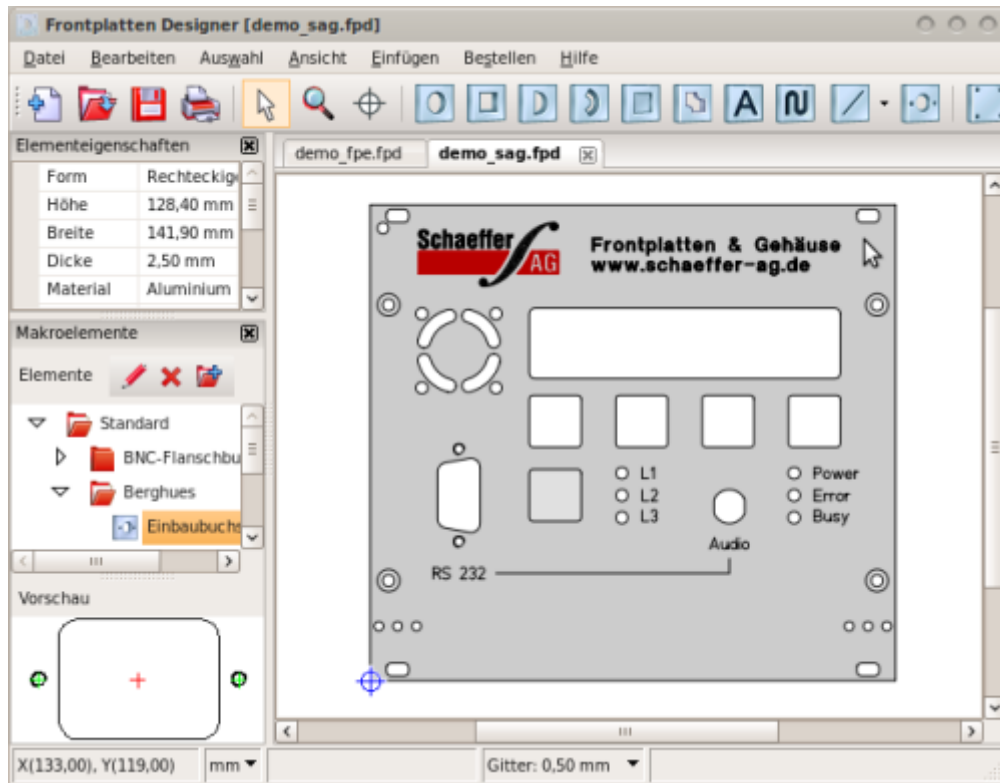


# FrontPanel Designer

FrontPanel designer is a proprietary tool Edited By [Schaeffer](#) to draw (Aluminium) frontpanels and have them made. Schaeffer is located in Germany.



FrontPanel Designer has been used to draw many frontpanels for the midibox project. It handles the \*.fpd files.

## Installing

You can download it here:

[http://www.schaeffer-ag.de/en/downloads/front\\_panel\\_designer/?no\\_cache=1](http://www.schaeffer-ag.de/en/downloads/front_panel_designer/?no_cache=1)

Just take the right Installer for your operating System and follow the instructions

## Getting into it

The Manual could be found here :

[http://www.schaeffer-ag.de/fpd-doc/en/index.htm?fpd\\_welcome\\_frontpld.htm](http://www.schaeffer-ag.de/fpd-doc/en/index.htm?fpd_welcome_frontpld.htm)

From:

<http://wiki.midibox.org/> - **MIDIbox**

Permanent link:

[http://wiki.midibox.org/doku.php?id=frontpanel\\_designer&rev=1465174843](http://wiki.midibox.org/doku.php?id=frontpanel_designer&rev=1465174843)

Last update: **2016/06/06 01:00**

