

Only six DOUT anode columns are used. These are current limited by resistors R1-6.

BOM v1.0 placeholder

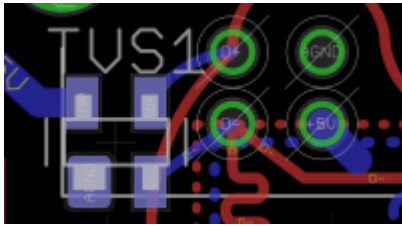
Type	Qty	Value	Package	Parts	Mouser	Reichelt	Conrad	Other	Notes
Resistors									
	6	100-220R 5%	THT	R1-6					
Resistor network									
	1	10k	SOM16	RN1	4816P-T02-103LF				
Capacitors									
	3	100n	1206	C1-3					
Diodes									
	19	1N4148	THT						
LEDs									
	18	various	3mm						put LEDs in the switches first!
ICs									
	1	74HC165	SOIC16	IC2	595-SN74HC165DR				
	2	74HC595	SOIC16	IC1, IC3					
Encoder									
	1	STEC12				STEC12E08			
Switches									
	18	MEC/APEM	3FTH9	SW1-18	642-3FTH9	TASTER 3FTH9	705276 - 62		
Headers									
	1	1*2	male						
	5	1*3	male						
	1	1*5	male						or wire directly
Sockets									
	1	USB B	horizontal	USB1	538-67068-7041	USB BW			
	1	USB A	upright	USB2	538-89485-8000				
	1	3.5mm		SOCK1	CUI SJ1-3535NG				other variants are possible (different pins switched etc.)
Hardware									
	2	M3 PCB mount		534-7695					

Versions

v1.0: first release.

Assembly placeholder

Solder the SMT parts first. Ensure the TVS diode is aligned with the larger pin on the larger pad and that the wide edge of the body fits between the silkscreen indicators:



Note this is the board viewed from the bottom; the larger pin is on the bottom-left.

To have a through-hole USB A socket, the pins are quite close together. Be careful to avoid bridges when soldering and **test with a multimeter to ensure no adjacent pins are connected afterwards!**

It goes without saying, but ensure none of the metal parts are touching (e.g. the outside of the USB sockets with J7, the 1N4148 diode with the mounting brackets etc.).

License

Currently the design is © 2017 antilog devices with all rights reserved; all documentation is CC BY-NC-SA 3.0.

From:

<http://wiki.midibox.org/> - **MIDIbox**

Permanent link:

http://wiki.midibox.org/doku.php?id=seqv4plus_jog&rev=1505157596

Last update: **2017/09/11 19:19**

