

# wCoreF4 PCB

This is the carrier board for the Waveshare Core407v. It performs breakout functions of all of the standard ports as per the design based on the STM32 Discovery.

## Schematic

The circuit is mostly identical to what was drawn previously. The following parts are different:

### USB entry (J1)



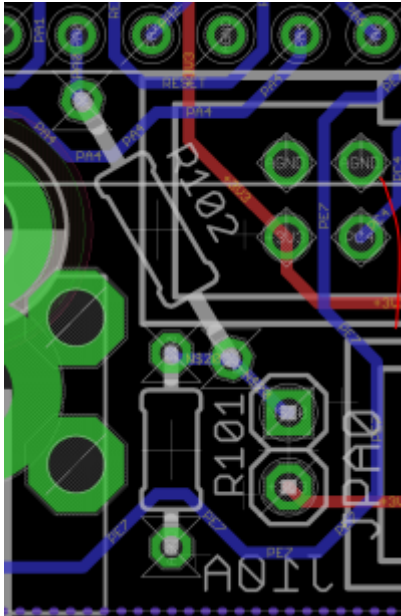
This header supplies +5V, 0V, USB data and the ID state. Normally it will be connected to the [USB module](#) by a short cable.

### Extended port (J16E)



The original J16 functionality is preserved, but extra pins are available on a IDC16 header. These include the Reset signal and pins normally controlling LEDs. This header is normally connected to the [RES-SD module](#).

### User button (JPA0)



This jumper replaces the “bootloader” functionality of the Discovery board's blue button. It could be wired to an external panel control if needed.

## BOM v1.0

Type	Qty	Value	Package	Parts	Mouser	Reichelt	Conrad	Other	Notes
<b>Resistors</b>									
	2	220R 5%	THT	R7A, R8A					
	2	220R 5%	1206	R7B, R8B					
	1	330R 5%	THT	R102					
	4	1k 5%	1206	R7B1-4					
	2	1k 5%	THT	R11, R13					
	1	10k 5%	THT	R12					
	1	220k 5%	THT	R101					
<b>Pots</b>									
	2	10k	6*5mm vert	P1, P2					
<b>Capacitors</b>									
	3	100n	1206	C1A, C1B, C2					
<b>Diodes</b>									
	1	1N4148	THT						
<b>Transistors</b>									
	1	BC337	TO-92	T1					
<b>ICs</b>									
	2	74HCT125	SOIC	IC1A, IC1B	595-SN74HCT125DR				Ensure <b>HCT</b>
	1	74HC595	SOIC	IC2					
<b>Headers</b>									
	2	1*2	male						

Type	Qty	Value	Package	Parts	Mouser	Reichelt	Conrad	Other	Notes
<b>Resistors</b>									
	1	1*3	male						
	1	1*5	male						or wire directly
	9	2*5	male						
	3	2*8	male						
	2	2*8	male						
<b>Hardware</b>									
	4		M3 spacer	8mm(?)					
<b>MCU breakout</b>									
	1	Waveshare Core 407v							

## Versions

v1.0: first release.

## Assembly

## License

Currently the design is © 2016 antilog devices with all rights reserved; all documentation is CC BY-NC-SA 3.0.

From:  
<http://wiki.midibox.org/> - **MIDIbox**

Permanent link:  
[http://wiki.midibox.org/doku.php?id=wcoref4\\_pcb&rev=1504733265](http://wiki.midibox.org/doku.php?id=wcoref4_pcb&rev=1504733265)

Last update: **2017/09/06 21:27**

