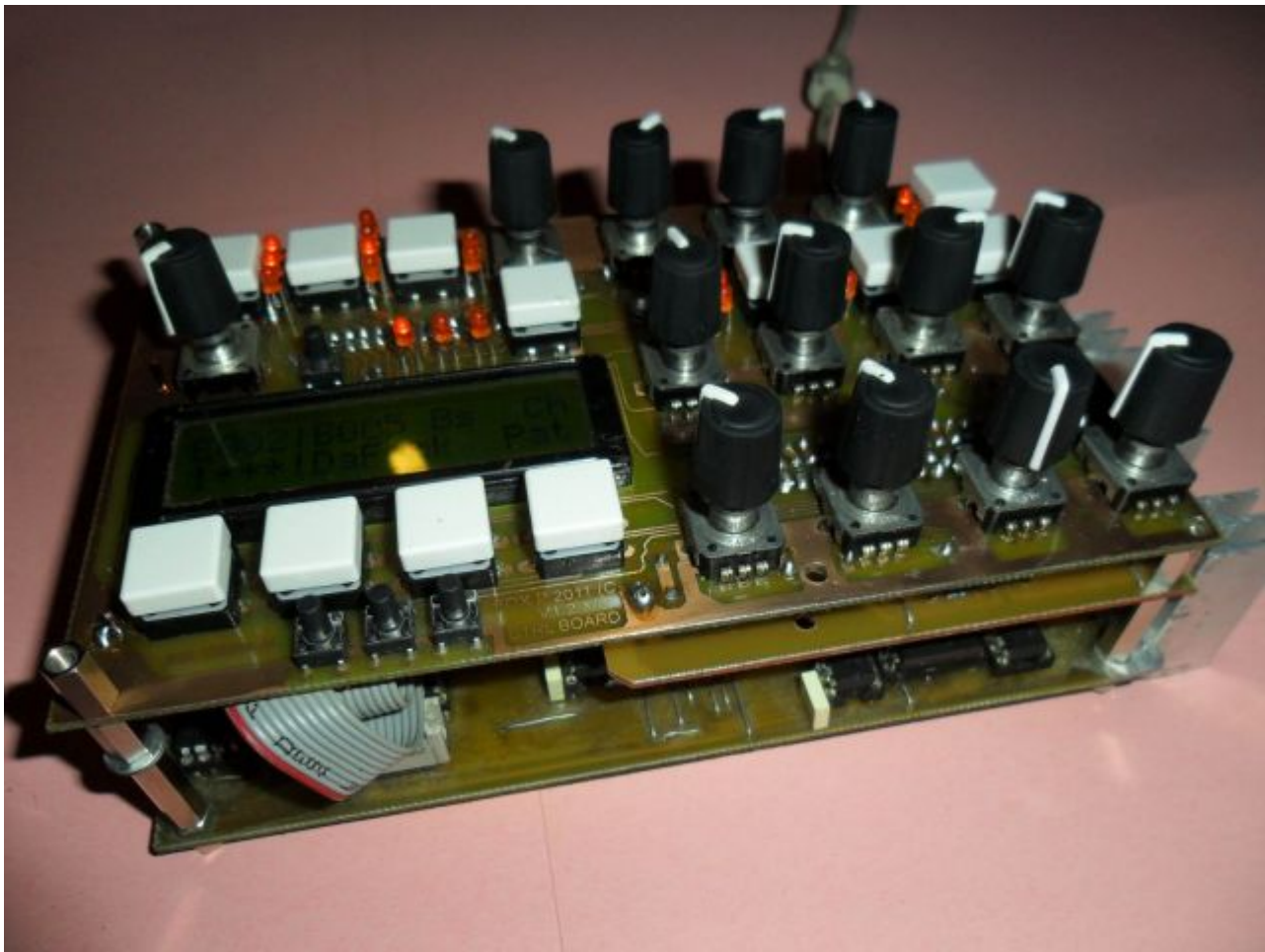


TWINSid V1.2 - MIDIbox SID Synthesizer V2



Midibox TWINSid is a light midibox sid v2 on three pcb wiht only two sid chip for stereo

sound and a dedicated control surface for the classic parameter

TWINSid V1.2 features :

The main board pcb integrated :

- 1 x psu parts (12v or 9v jumper setting)
- 1 x core module
- 8 x bankstick (7 for 896 patches 1 for 128 ensemble)
- 1 x ltc module for midi thru and second midi out
- 2 x sid module

SR board :

- The SR board integrated the din and dout module

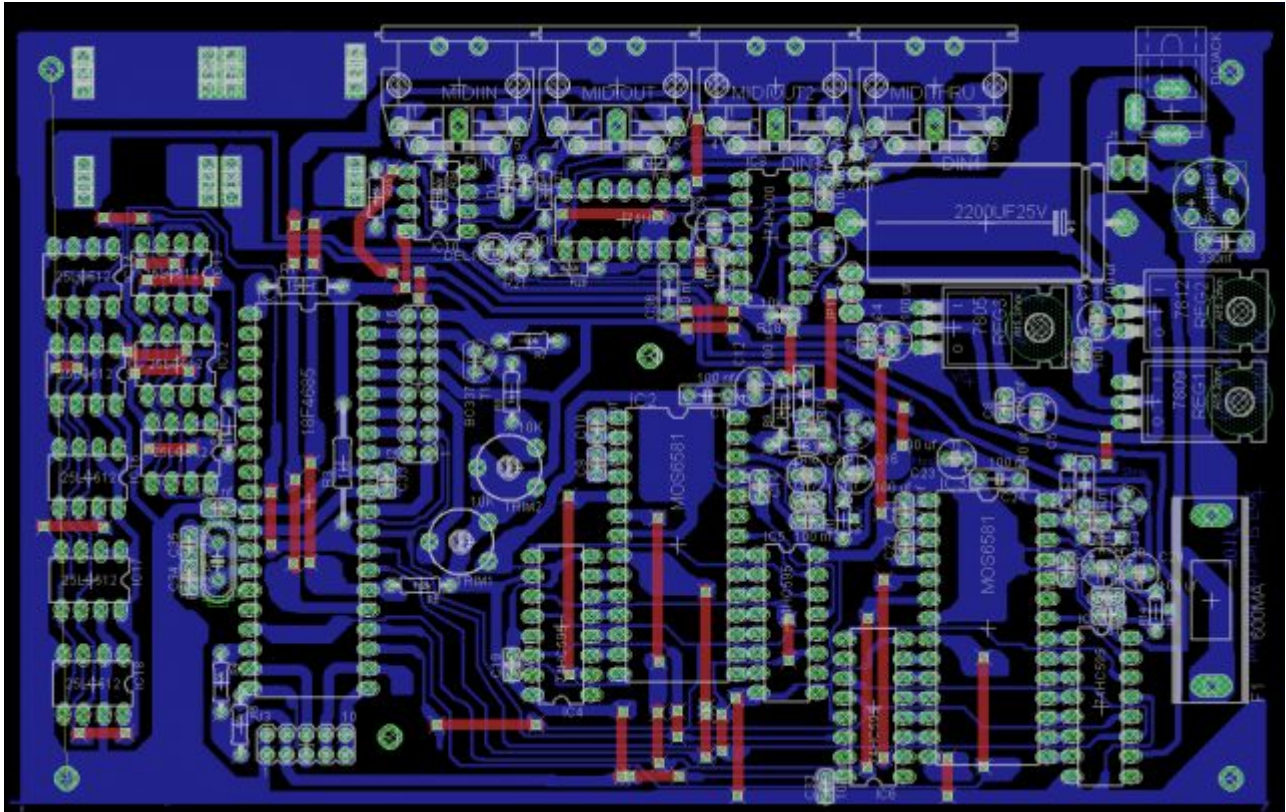
CTRL board :

- The CTRL board have 13 pots and 16 switches for an easy programming
- 2x16 lcd screen

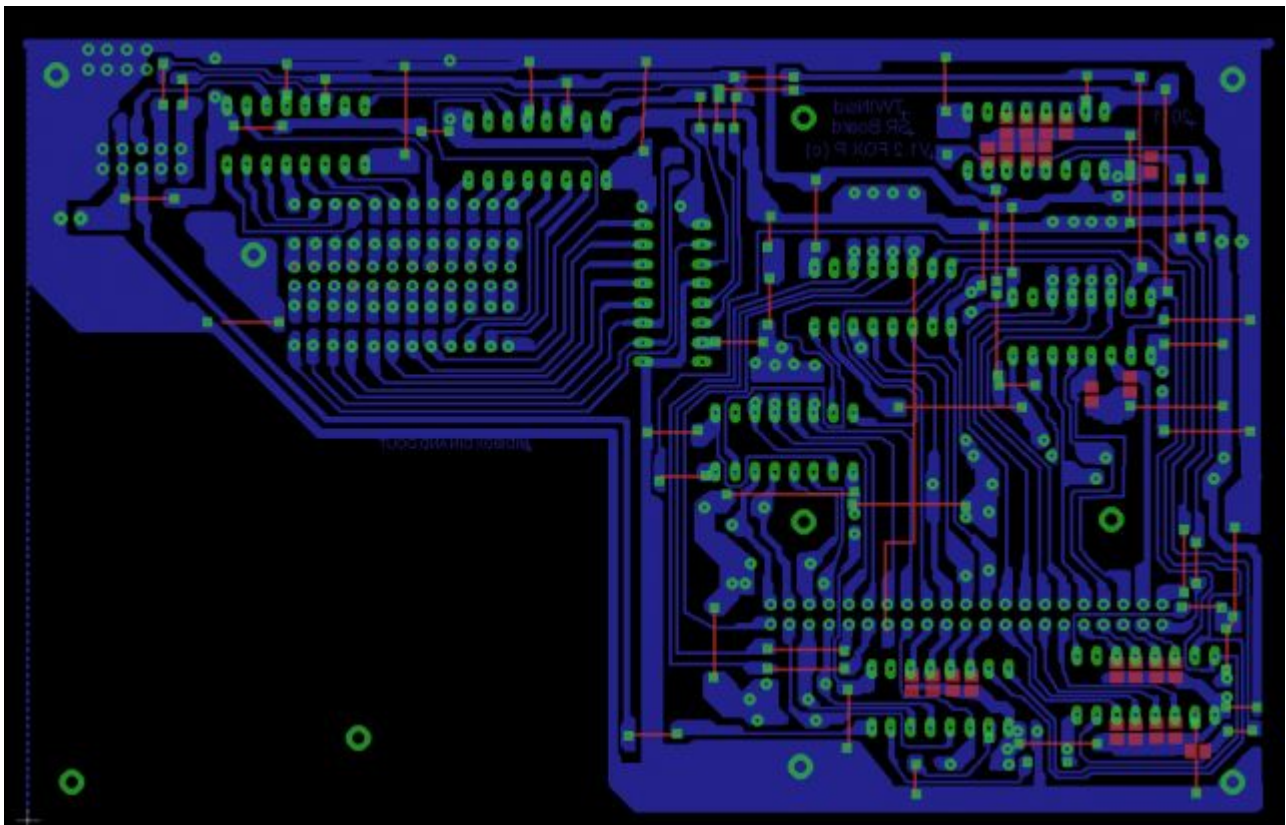
On classic pcb 100x160mm

Pcb Quick view :

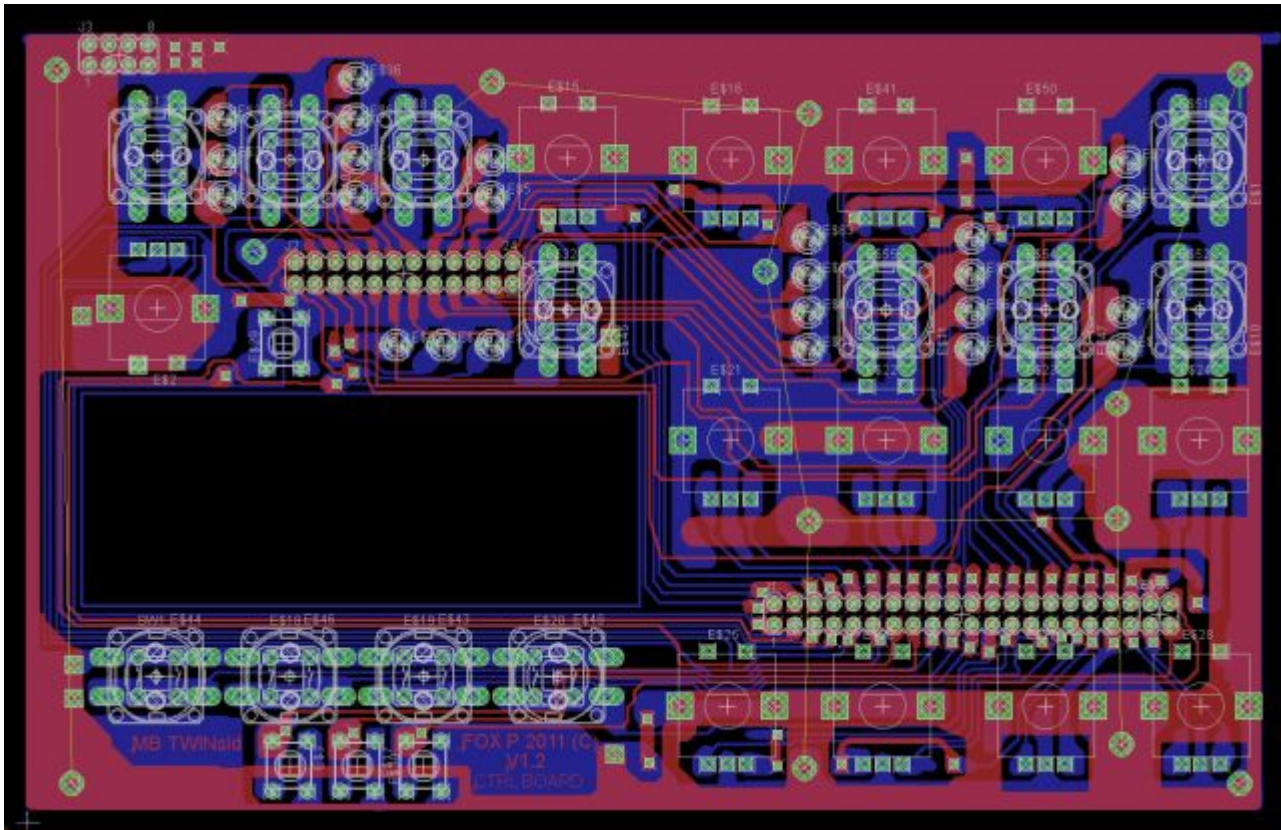
Main board



SR board



CTRL board



Files :

Main board.pdf : <http://midibox.org/forums/applications/core/interface/file/attachment.php?id=9281>

SR board.pdf : <http://midibox.org/forums/applications/core/interface/file/attachment.php?id=9282>

CTRL board.pdf

A : <http://midibox.org/forums/applications/core/interface/file/attachment.php?id=9287>

B : <http://midibox.org/forums/applications/core/interface/file/attachment.php?id=9288>

HEX file : <http://midibox.org/forums/applications/core/interface/file/attachment.php?id=9286>

TWINSid V1.1 on youtube

V1.1 <http://www.youtube.com/watch?v=c0opsniKrfY&feature=related>

From:
<http://wiki.midibox.org/> - **MIDIbox**

Permanent link:
<http://wiki.midibox.org/doku.php?id=mb-twinsid>

Last update: **2015/11/06 00:49**

