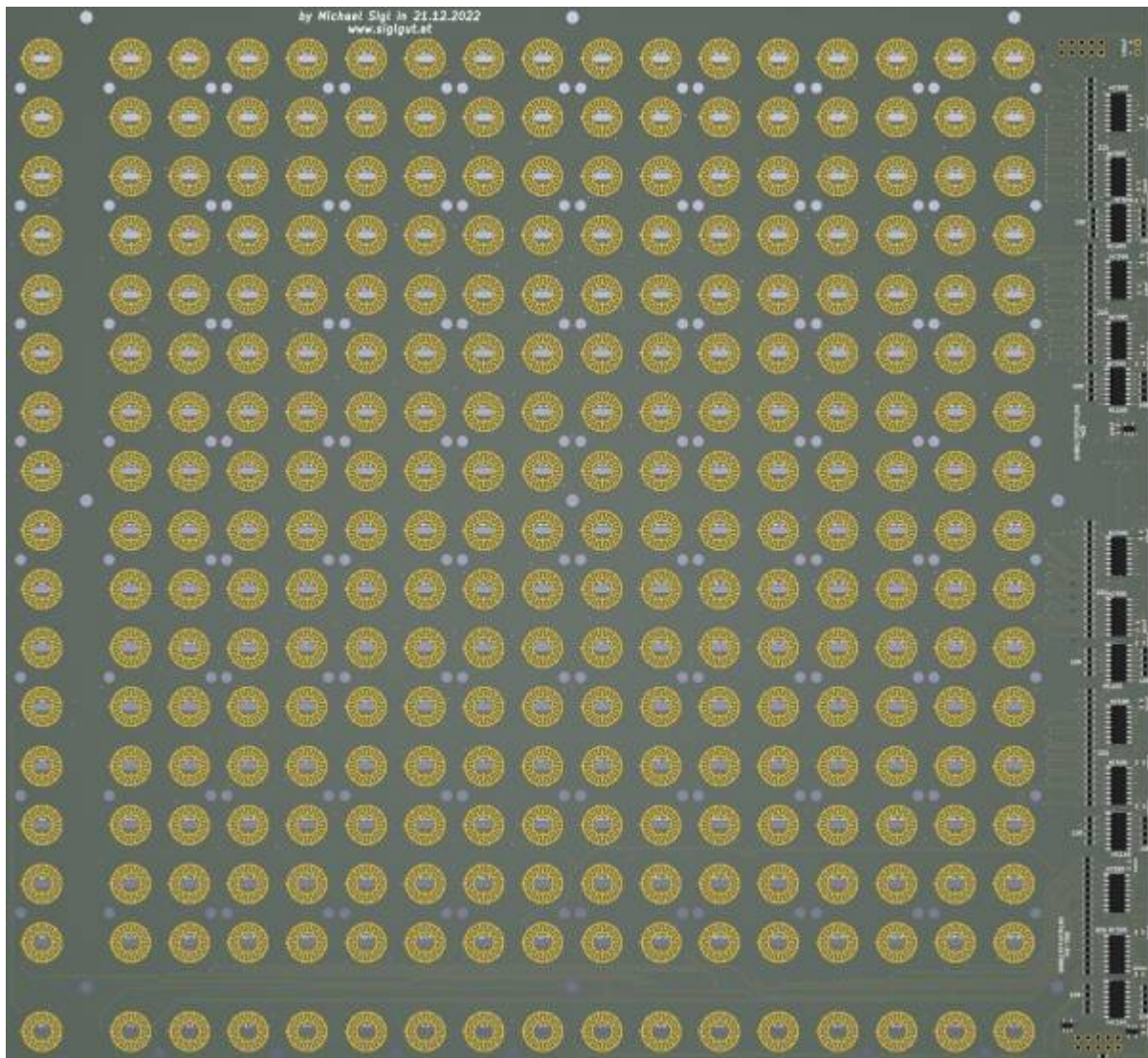


# BLM16x16+X V2 - Board





for [TriggerMatrix4](#) i used Latigid ONs PCB: [blm16x16\\_build\\_guide](#), but i had only 2 PCBs, one for me, and one finally got Maxim Anokhin (Limewax), in order to get more Triggermatrices into the world I made my own Version for the upcoming [triggermatrix5](#)

## Schematic

[blm16x16-schematic.pdf](#)

## Building and BOM

The Values are printet on the PCB.

[blm16x16-pcb-back.pdf](#)

[blm16x16-pcb-front.pdf](#)

**Following Quantity is for 1 PCB, Mouser:**

open following link: <https://www.mouser.com/tools/part-list-import.aspx>

**& copy past follwong list:**

595-SN74LVC1G17DBVR|12  
80-C0805C104M5R|32  
710-860010273011|1  
863-BAT54LT1G|34  
595-SN74HC595DR|15  
595-SN74HC165DT|5  
710-61201021621|2  
863-BC818-40LT1G|34  
660-RK73B2ATTD102J|34  
660-RK73B2ATTD103J|75  
603-RC0805JR-13220RL|40  
660-RK73H2ATTD56R0F|40  
604-APTR3216ZGC|300  
604-APTR3216QBC/D|300  
833-1N4148WL2-TP|150

**19x Silicone Elastomer 4x4**

## To Do

Order the Prototype, then solder...

## Community users working on it

- **Phatline** = PCB & Schematic, UI-Programming, Documentation...

Just let a Private message on the forum to user already involved.  
or join the forum: [Triggermatrix 5](#)

From:  
<https://wiki.midibox.org/> - **MIDIbox**

Permanent link:  
<https://wiki.midibox.org/doku.php?id=blm16x16v2&rev=1671941941>

Last update: **2022/12/25 04:19**

