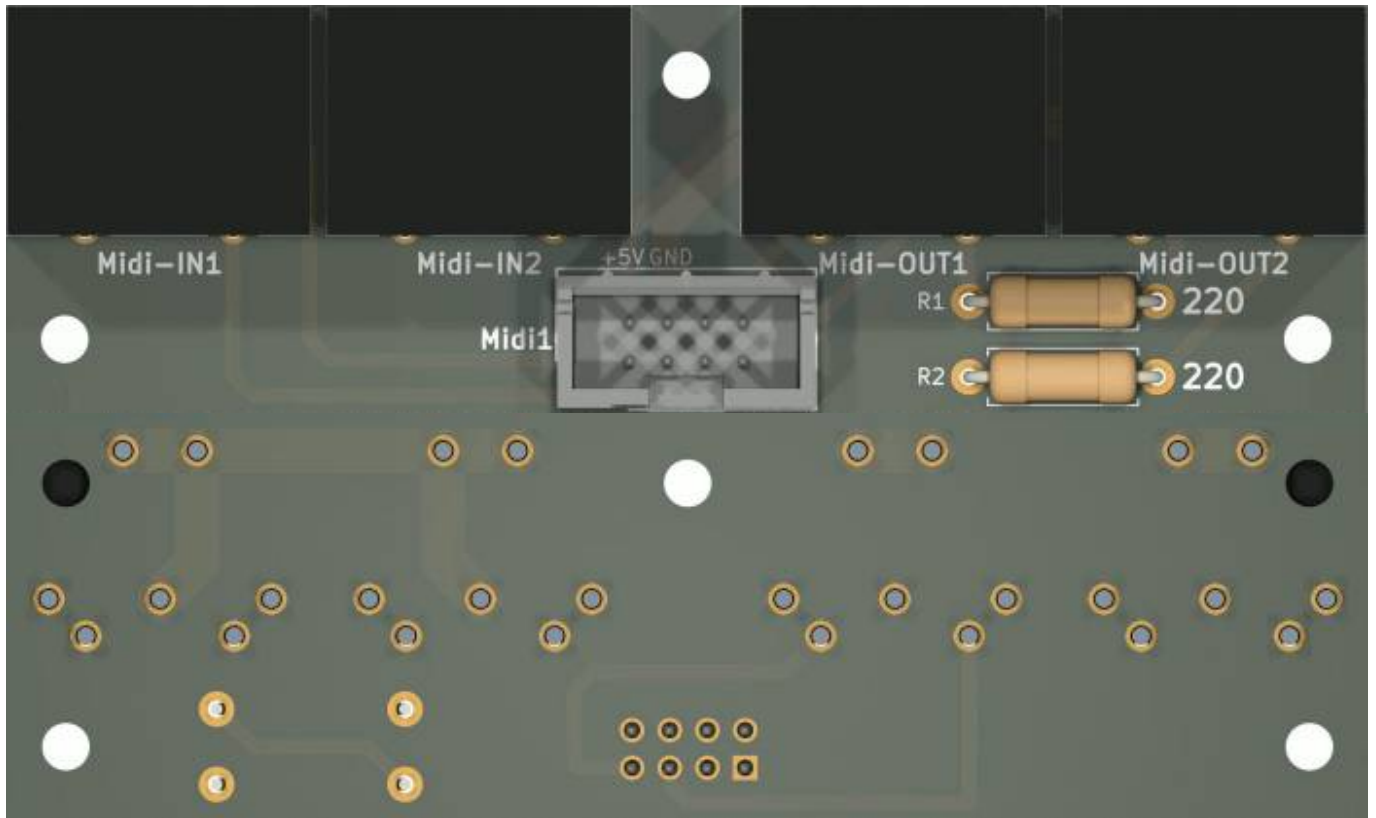


Core4Disc Midi-Expansion



this is one essential part for my [triggermatrix5](#)

Schematic



Building and BOM

Handsolder, easy project...

BOM

| qty | reference | value | footprint | mouser |
|-----|-------------------------|--------------|----------------------|---|
| 1 | Midi1 | Pin-Head-2x4 | PinHead-Shrd-2x4-THT | 649-75869-232LF |
| 4 | Midi-IN1-2, Midi-OUT1-2 | Din 5Pole | KCDX5SS2 | 806-KCDX-5S-S2 |
| 2 | R1, R2 | 220 | THT or 1206 | SMD: 660-RK73B2BTTD221J THT: 281-220-RC |

R1 and R2 can be solderd as Thruhole, or SMD1206 Package

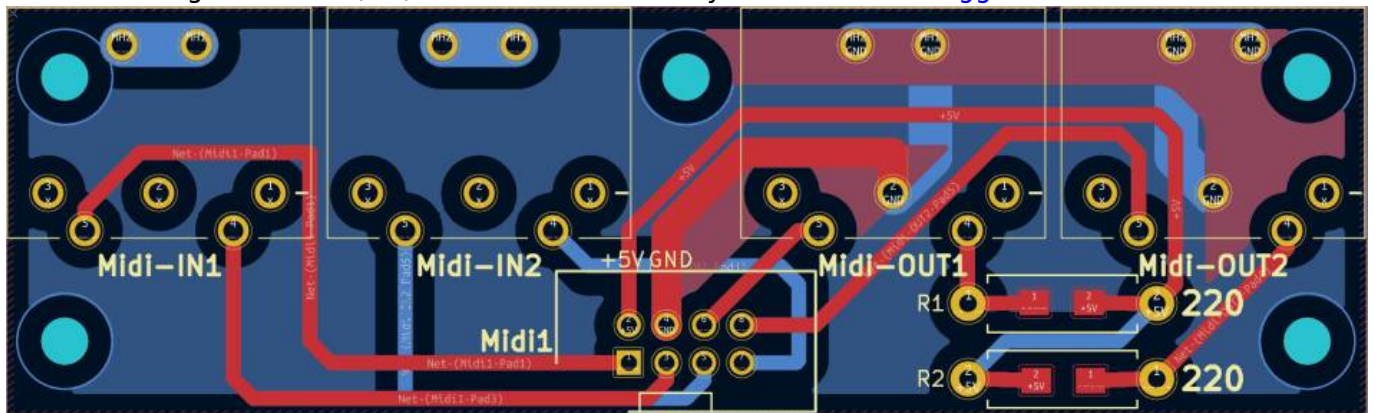
Order-List

copy following list into this [mouser.com-Link](https://www.mouser.com)



649-75869-232LF|1
 806-KCDX-5S-S2|4
 660-RK73B2BTDD221J|2

The 3x Montage Blocks H1,H2,H3 * 4 = 12 - is already included in the [triggermatrix5](#) - BOM!



To Do

waiting for Prototype PCB

Community users working on it

- **Phatline** = PCB & Schematic, UI-Programming, Documentation...

Just let a Private message on the forum to user already involved.
 or join the forum: [Triggermatrix 5](#)

From:
<https://wiki.midibox.org/> - **MIDIbox**

Permanent link:
<https://wiki.midibox.org/doku.php?id=core4discmidiex&rev=1672257035>

Last update: **2022/12/28 19:50**

