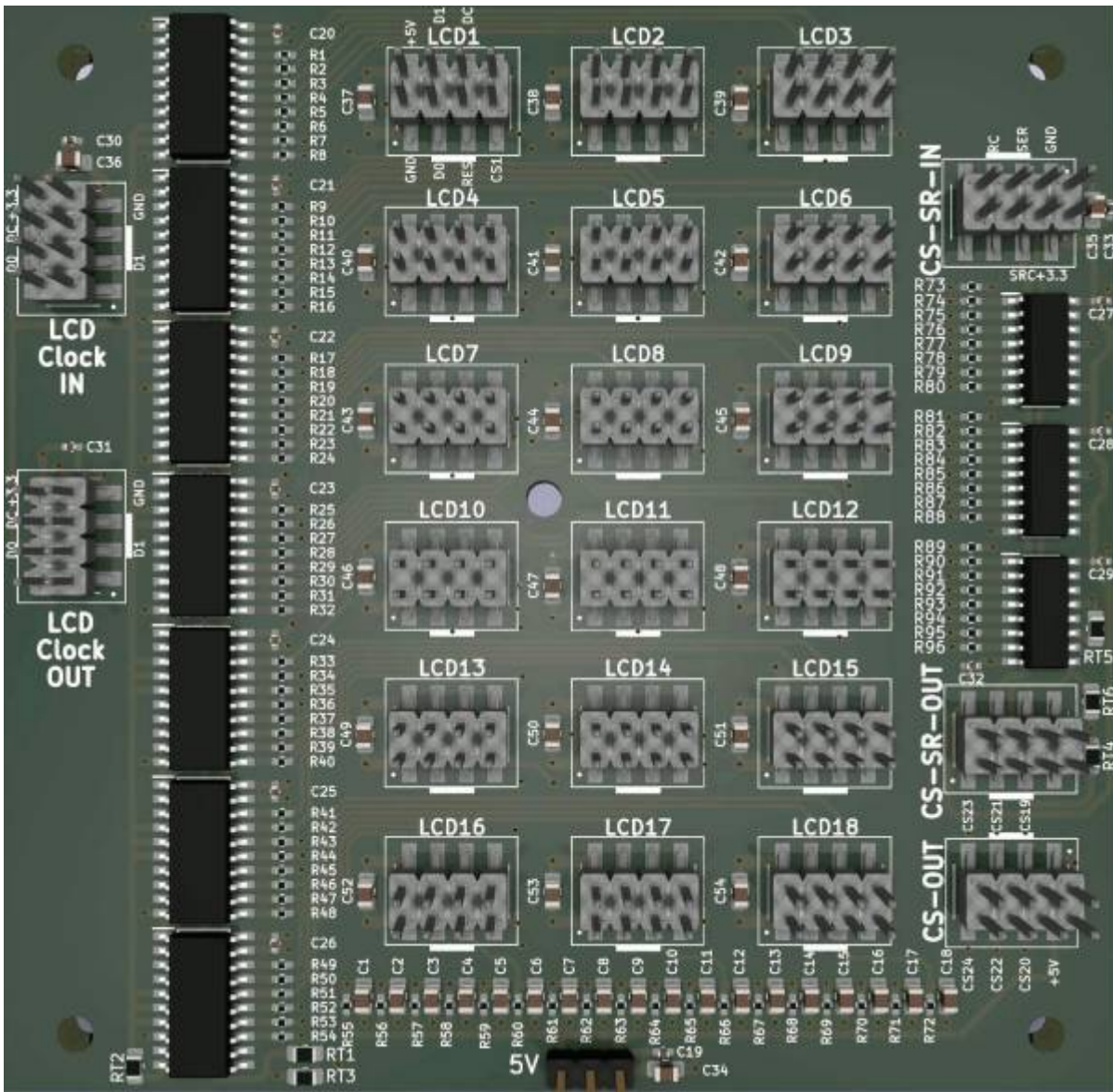
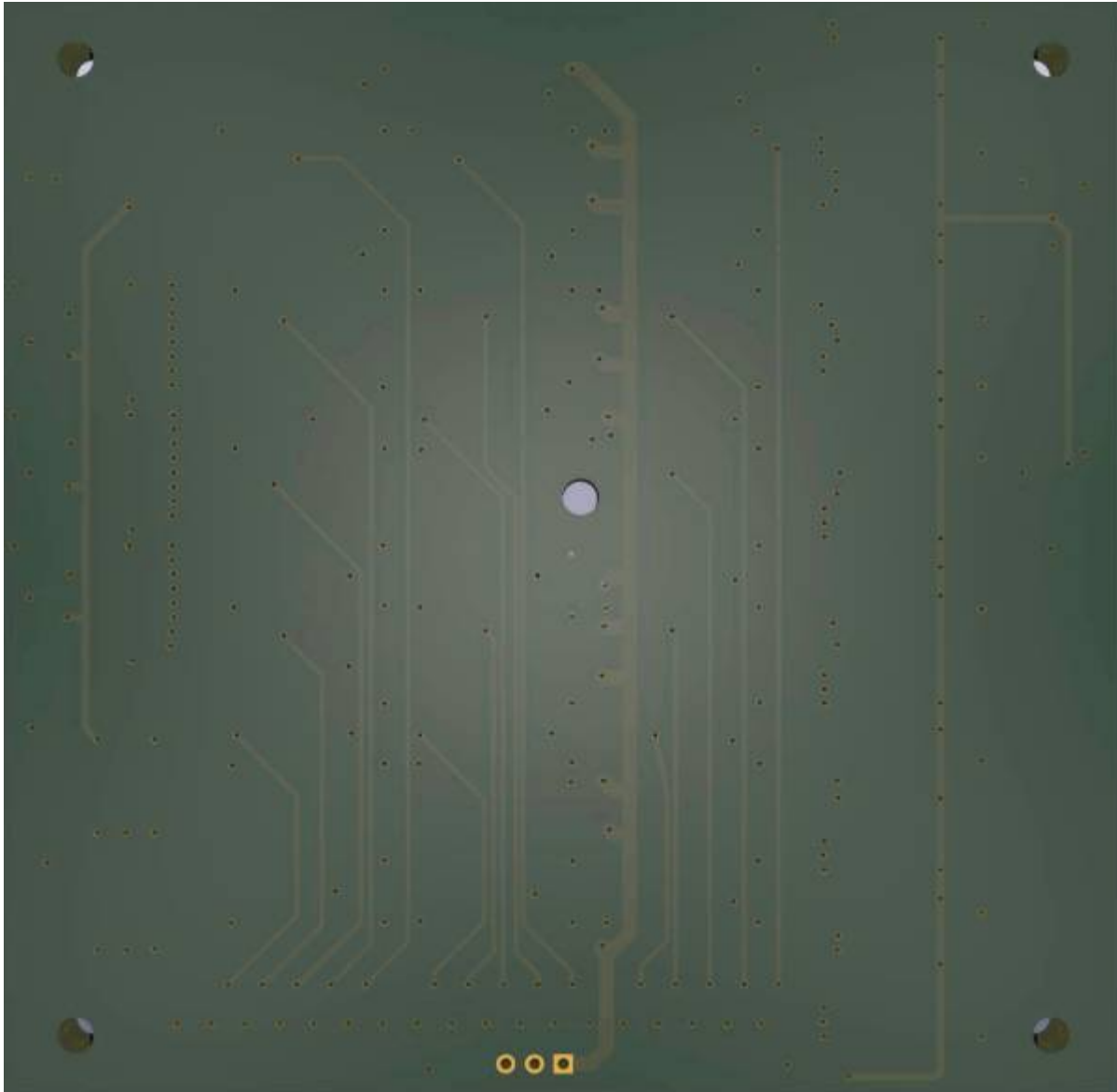


# Display Driver - Board - for 18 SSD1306 Screens



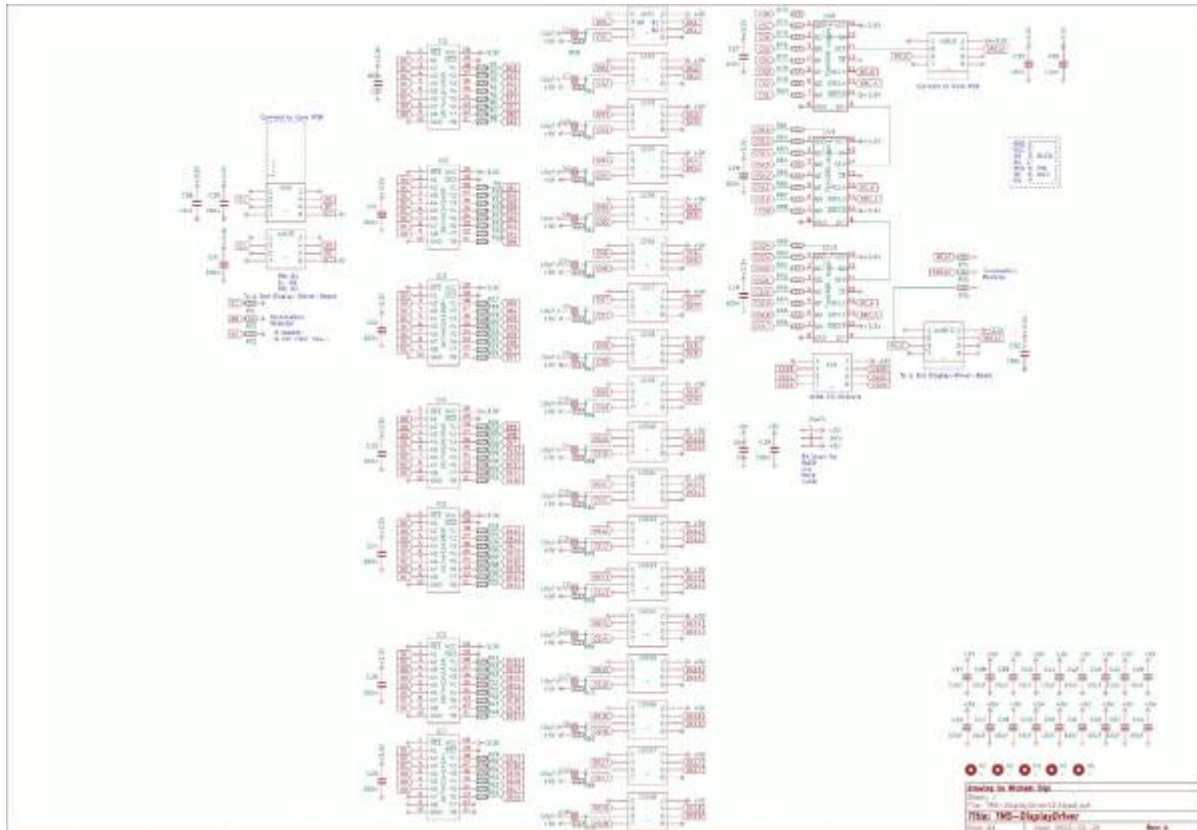


this is one essential part for my [triggermatrix5](#)

I need there 18 Display, and i had good experiece with andys [display\\_driver](#)-board since i didnt want to solder this board by hand again - i created this board. its fully SMD, and made it pick and place ready - so no soldering required!

## Schematic

[display-driver-smd-schematic.pdf](#)



# Building and BOM

Its build by pick and place robots... so no need to build

## BOM

Comment	Designator	Footprint	LCSC
10uF	C1-18,C34-54	0805_C	CL21A106KAYNNNE
100n	C19-33	0402_C	C307331
-	CS1,LCD1-18,inB10,outB10,in15	PinHead-SMD-2,54mm Pitch	C192300
SN74HC541	IC1-7	SOIC127P780X200-20N	C116811
74HC595	IC8-10	SOIC-16	C5947
220 OHM	R1-54	0402_R	C25091
1K OHM	R55-96	0402_R	C11702



## To Do

Order the Prototype, waiting for christmas....

## Community users working on it

- **Phatline** = PCB & Schematic, UI-Programming, Documentation...

Just let a Private message on the forum to user already involved.  
or join the forum: [daw-controller-ableton](#)

From:

<https://wiki.midibox.org/> - **MIDIbox**

Permanent link:

<https://wiki.midibox.org/doku.php?id=displaydriver-smd&rev=1671936391>

Last update: **2022/12/25 02:46**

