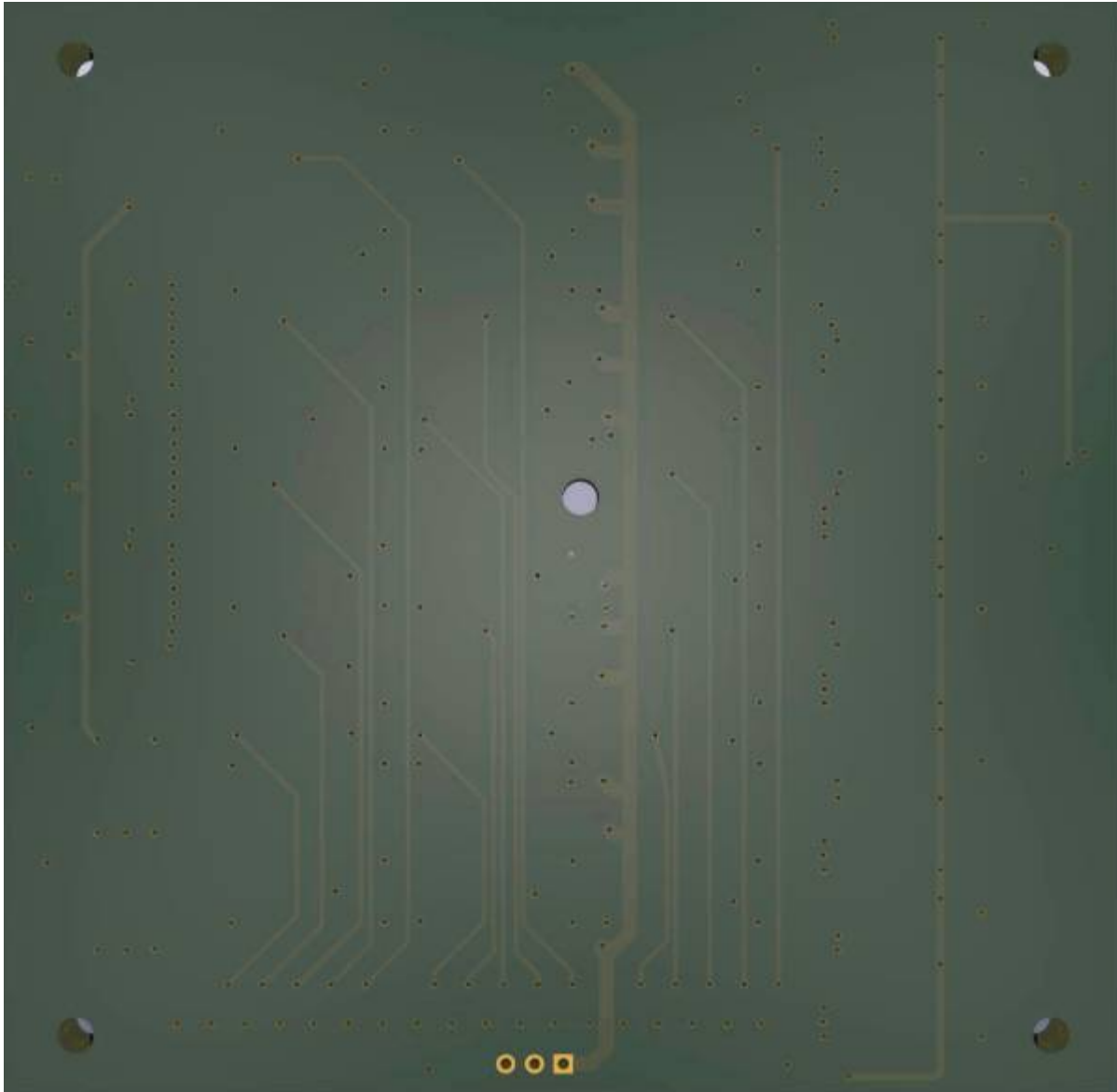


Display Driver - Board - for 18 SSD1306 Screens





this is one essential part for my [triggermatrix5](#)

I need there 17 Displays, and i had good experiance with andys [display_driver](#)-board since i didnt want to solder this board by hand again - i created this board. its fully SMD, and made it pick and place ready - so no soldering required!

Schematic

[display-driver-smd-schematic.pdf](#)



Building and BOM

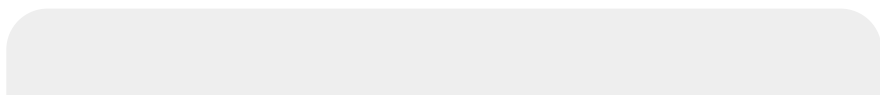
Follwing list is for reference, and debugging only, **no need to order them!** all the parts are already soldered on the PCB!

BOM

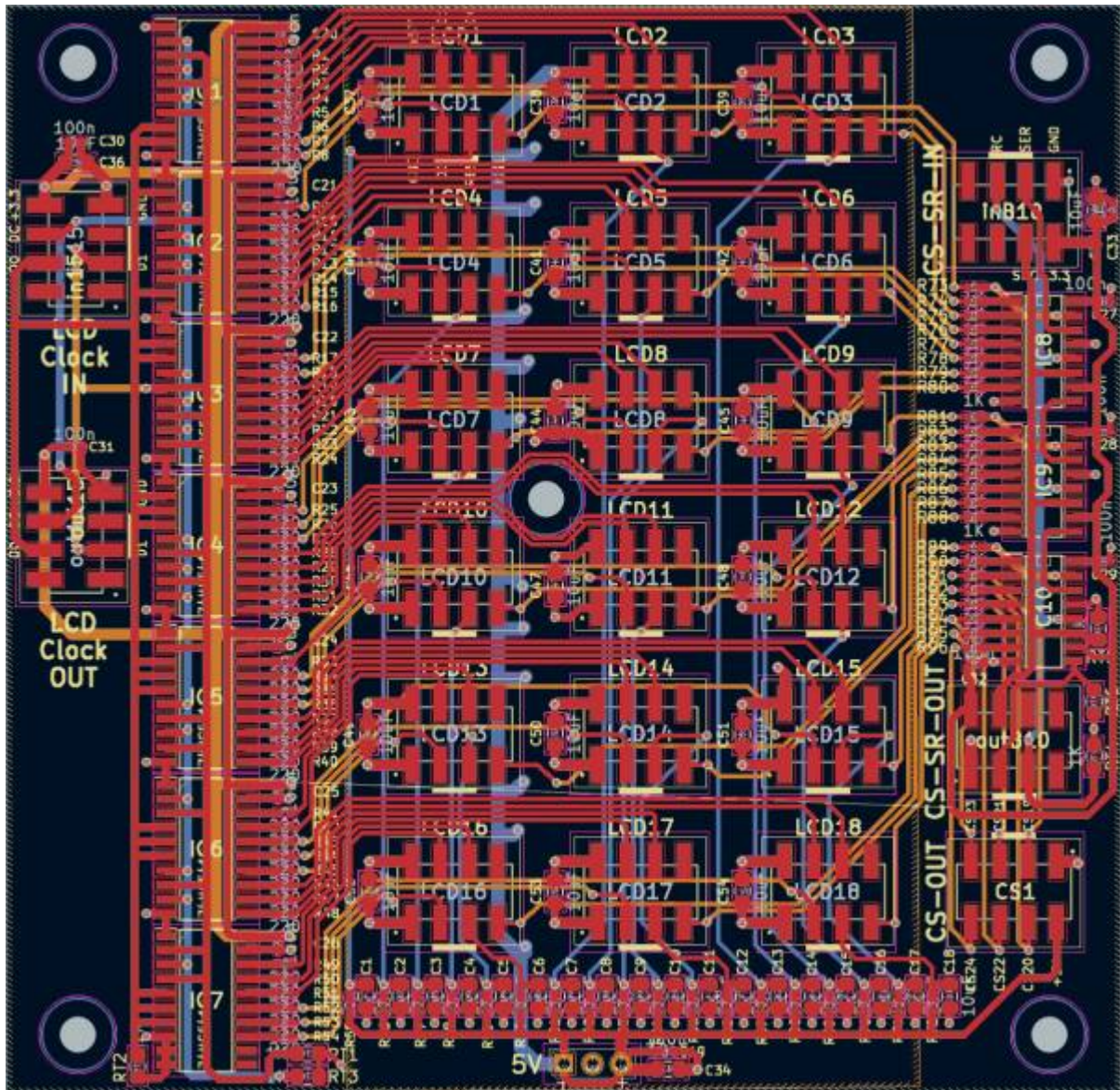
Comment	Designator	Footprint	LCSC	
10uF	C1-18,C34-54	0805_C	CL21A106KAYNNNE	
100n	C19-33	0402_C	C307331	
-	CS1,LCD1-18,inB10,outB10,in15	PinHead-SMD-2,54mm Pitch	C192300	
SN74HC541	IC1-7	SOIC127P780X200-20N	C116811	
74HC595	IC8-10	SOIC-16	C5947	
220 OHM	R1-54	0402_R	C25091	
1K OHM	R55-96	0402_R	C11702	
22	IDC-Connector	2x4Pin	IDC	710-61200823021

Order-List

copy following list into this [mouser.com-Link](https://www.mouser.com)



710-61200823021|22



To Do

waiting for the assembled Prototype

Community users working on it

- **Phatline** = PCB & Schematic, UI-Programming, Documentation...

Just let a Private message on the forum to user already involved.
or join the forum: [Triggermatrix 5](#)

From:

<https://wiki.midibox.org/> - **MIDIbox**

Permanent link:

<https://wiki.midibox.org/doku.php?id=displaydriver-smd&rev=1672260630>

Last update: **2022/12/28 20:50**

