

# SCS OLED module

Combination of 0.96" SSD1306 OLEDs and switches for an [SCS](#)

## Schematic

---

### BOM v1.0

| Type      | Part  | Value          |
|-----------|-------|----------------|
| Caps      | C25   | DNF            |
|           | C26   | DNF            |
|           | C29   | 10uF polarised |
| Encoder   | EN1   | 12mm           |
|           | EN2   | 12mm           |
| Header    | J1    | PINHD-2X54WALL |
|           | J2    | +5V            |
|           | J5    | PINHD-2X54WALL |
| OLEDs     | LCD1  | 0.96_OLED      |
|           | LCD2  | 0.96_OLED      |
|           | LCD3  | 0.96_OLED      |
|           | LCD4  | 0.96_OLED      |
| Resistors | R3    | DNF            |
|           | R4    | DNF            |
|           | R7    | DNF            |
|           | R9    | 2k2            |
| Switches  | S1(A) | DT6 or 6mm     |
|           | S2(A) | DT6 or 6mm     |
|           | S3(A) | DT6 or 6mm     |
|           | S4(A) | DT6 or 6mm     |
|           | S5(A) | DT6 or 6mm     |
|           | S6(A) | DT6 or 6mm     |

## Versions

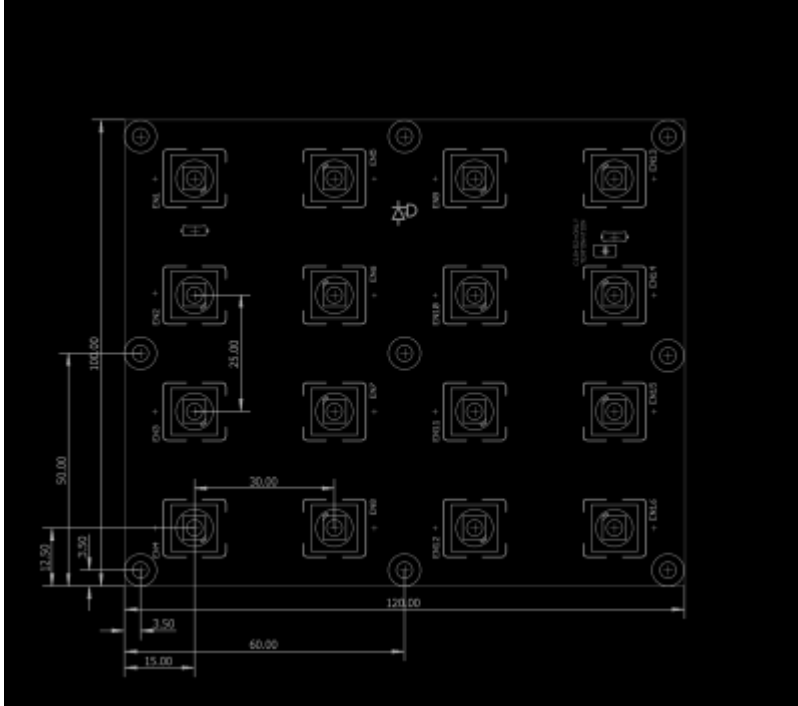
v1.0: first release

## Assembly

## Interconnections

- J1

## Dimensions



encs\_dxf.zip

## License

Currently the design is © 2016 antilog devices with all rights reserved; all documentation is CC BY-NC-SA 3.0.

From:

<https://wiki.midibox.org/> - **MIDIbox**

Permanent link:

[https://wiki.midibox.org/doku.php?id=enc\\_4\\_4&rev=1520322337](https://wiki.midibox.org/doku.php?id=enc_4_4&rev=1520322337)

Last update: **2018/03/06 07:45**

