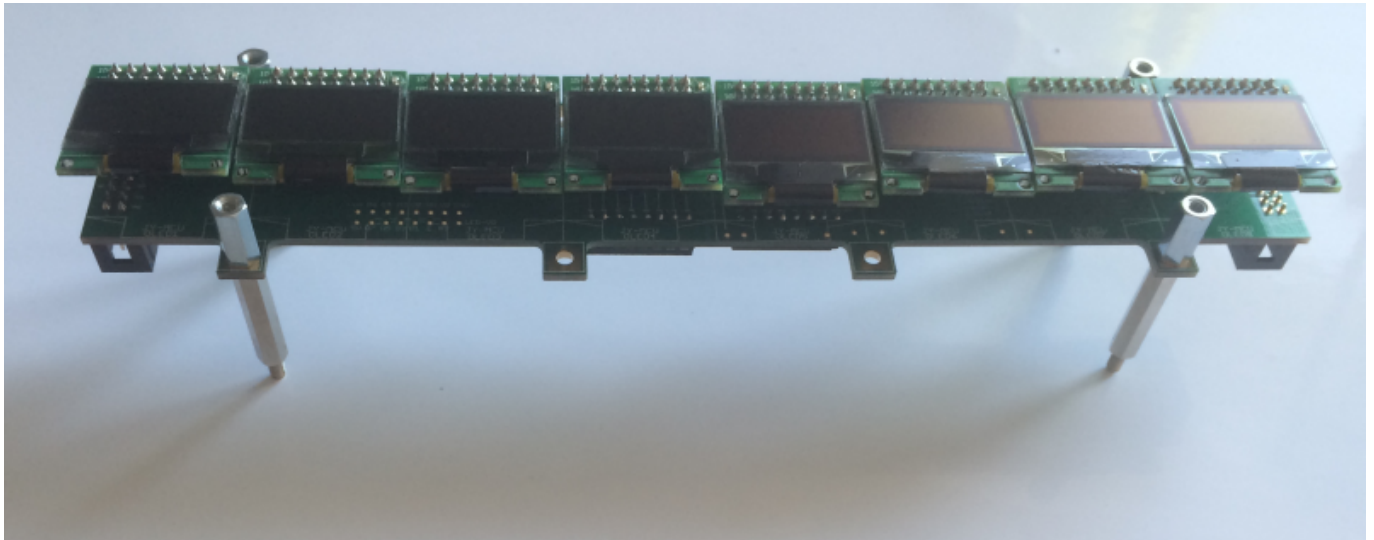


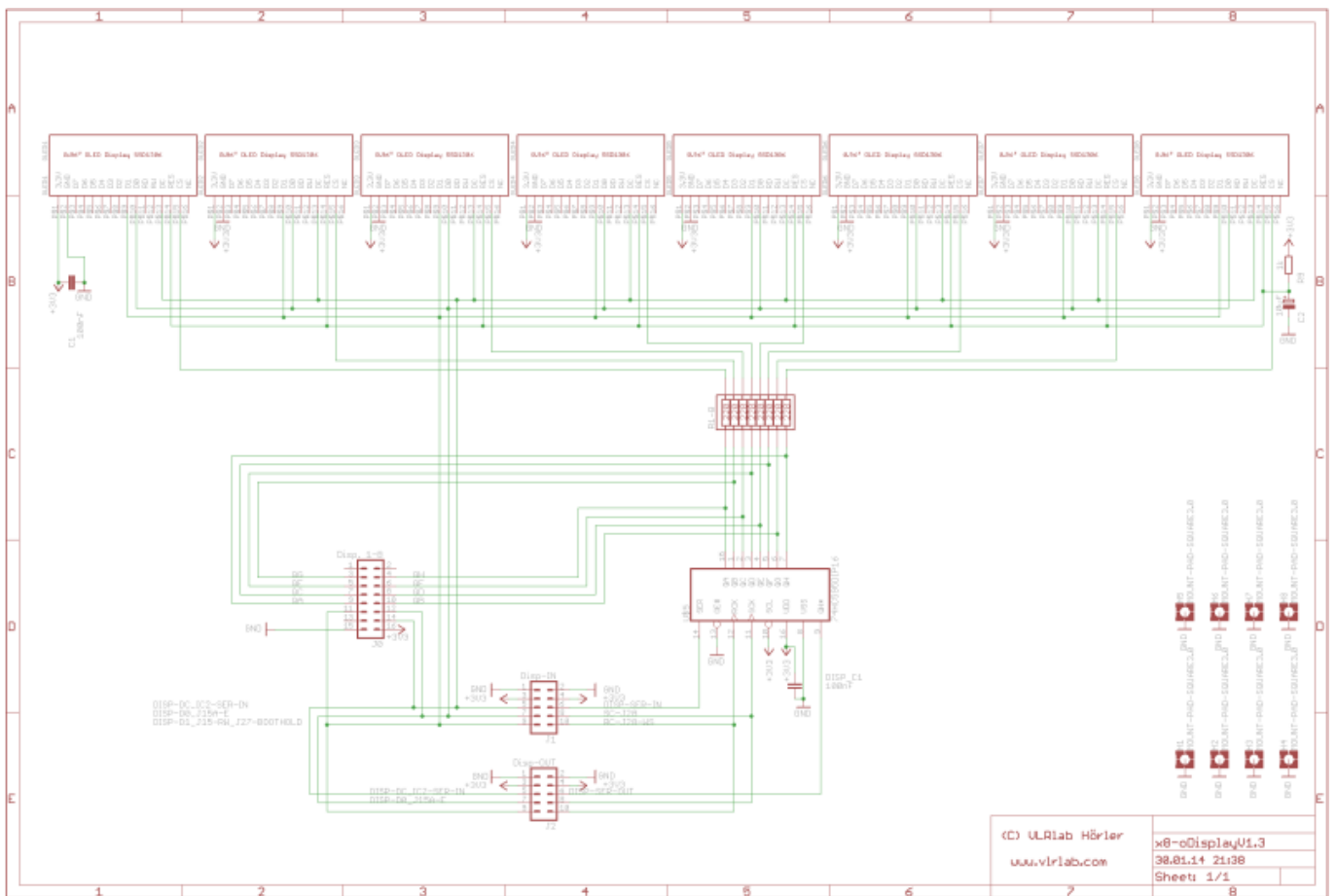
Fadercore

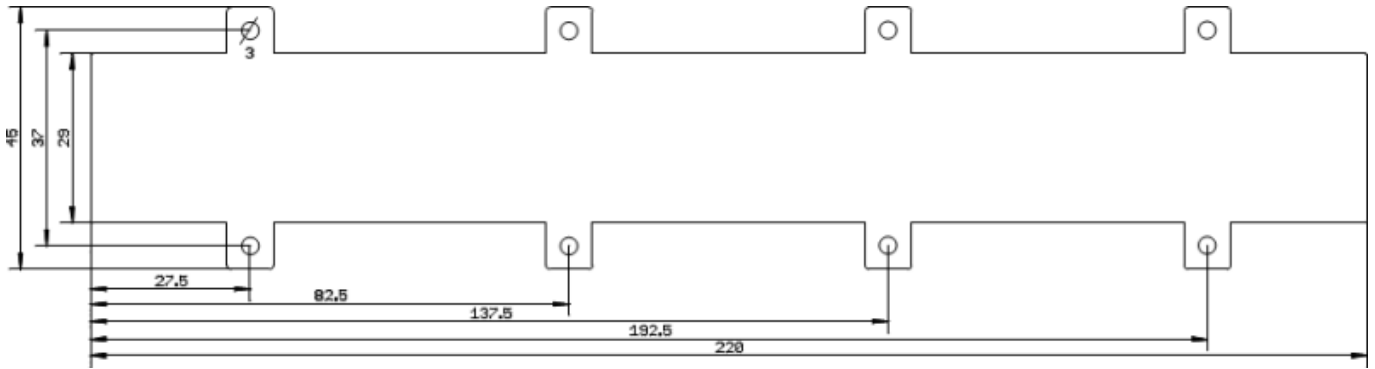
VLR-8oDisp

A PCB for chaning up to 32 OLEDs on 4x8 OLED Modules.



Eagle Files: <https://github.com/novski/Midibox/tree/master/VLR-8Disp>





BOM

Bill of Material

Allways look for the cheapest seller, the Price may vary heavy!!! And look for Local dealers preferred.

The OLEDs

I got those displays from this dealer: <http://www.aliexpress.com/snapshot/207517549.html>

The other Materials: Mouser

- 2x10pin Header, 517-30310-6002
- 1x16pin Header, 517-30316-6002
- 2x8Pin DIP, 571-1-390261-4
- 1xResistor Array 220Ohm, 652-4116R-1LF-220
- 1x74HC595, 595-SN74HC595N
- 2x100nF, 505-MKS2.1/63/5
- 1x100uF, 667-ECE-A1EKA100
- 1x1kOhm, 660-MF1/4DCT52A1001F
- 8xFemale Header, 649-66953-008

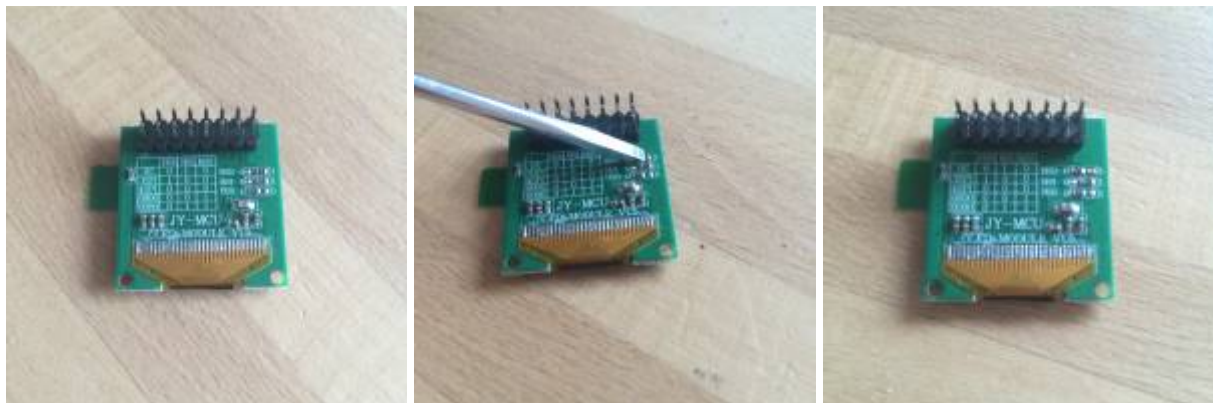
Project Order Basket on Mouser:

<http://www.mouser.com/ProjectManager/ProjectDetail.aspx?AccessID=0c73d90bd5>

The PCB is available under: <https://v1rlab.com/pcb/10-8-odisplay.html>

How to get Started

You will need to set the Connection of the Display.



So all 3 Code Resistors need to be on the Left side...

If you don't like the LED on top you can de-solder it now.

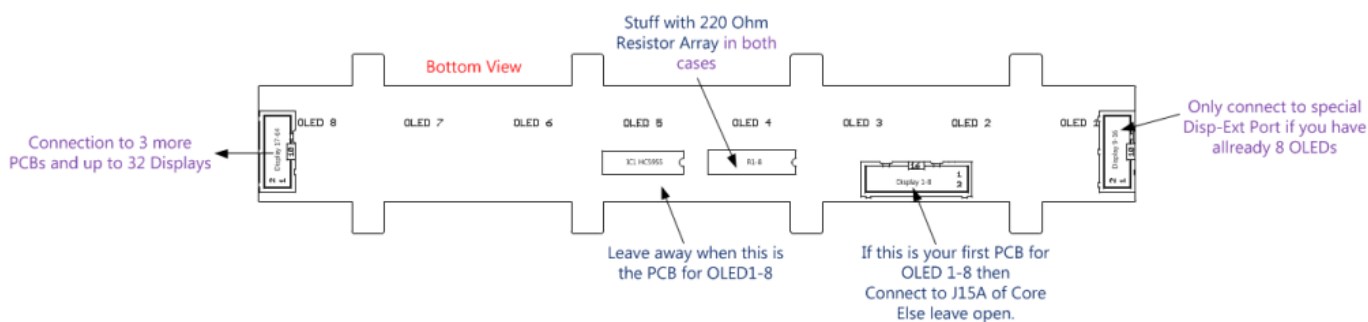
Prepare the PCB

The first PCB gets its Selection Lines from the Display Connection J15A on the Core PCB. So you will need to solder the 16Pin Header at this Panel. Here you can leave out the 10pin Headers and the IC Socket for the Shift register, if you like.

The Second PCB for Display 9-16 gets its Selection lines from the Shift register and doesn't need the 16pin Header so you have to solder J1 and J2 but you can leave out J0.

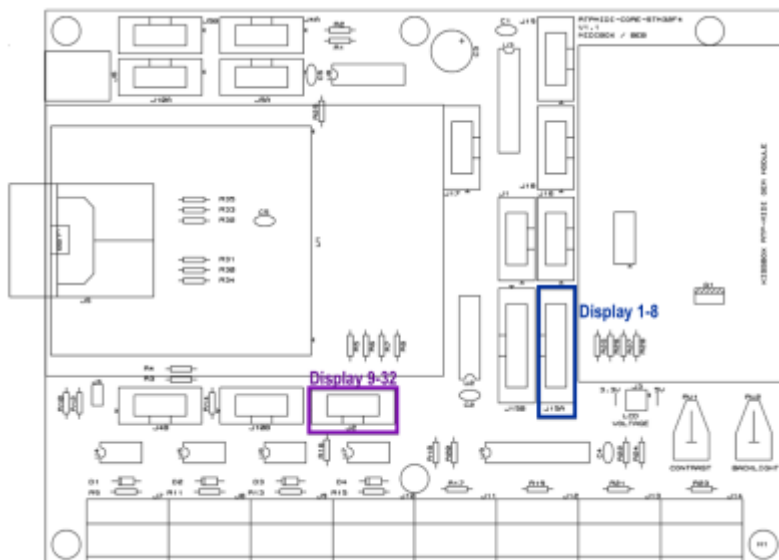
For both use cases you need to stuff the Resistor array so its best to solder a 16pin IC-Socket and stuff it in that.

PCB 3&4 are same as the second.



Prepare the Connection

How to connect it to the Core



Test it in MIOS

This is a Test file for Mios:

RESET_HW

LCD "%C" LCD "@(1:1:1)OLED1" LCD "@(2:1:1)OLED2" LCD "@(3:1:1)OLED3" LCD "@(4:1:1)OLED4"
 LCD "@(5:1:1)OLED5" LCD "@(6:1:1)OLED6" LCD "@(7:1:1)OLED7" LCD "@(8:1:1)OLED8" LCD
 "@(9:1:1)OLED9" LCD "@(10:1:1)OLED10" LCD "@(11:1:1)OLED11" LCD "@(12:1:1)OLED12" LCD
 "@(13:1:1)OLED13" LCD "@(14:1:1)OLED14" LCD "@(15:1:1)OLED15" LCD "@(16:1:1)OLED16" LCD
 "@(17:1:1)OLED17" LCD "@(18:1:1)OLED18" LCD "@(19:1:1)OLED19" LCD "@(20:1:1)OLED20" LCD
 "@(21:1:1)OLED21" LCD "@(22:1:1)OLED22" LCD "@(23:1:1)OLED23" LCD "@(24:1:1)OLED24" LCD
 "@(25:1:1)OLED25" LCD "@(26:1:1)OLED26" LCD "@(27:1:1)OLED27" LCD "@(28:1:1)OLED28" LCD
 "@(29:1:1)OLED29" LCD "@(30:1:1)OLED30" LCD "@(31:1:1)OLED31" LCD "@(32:1:1)OLED32"

From:

<https://wiki.midibox.org/> - **MIDIbox**

Permanent link:

https://wiki.midibox.org/doku.php?id=fadercore_-_vlr-8odisp&rev=1406379775

Last update: **2014/07/26 13:02**

