

# LRE8x2 096 SSD1306-BAR for Eurorack

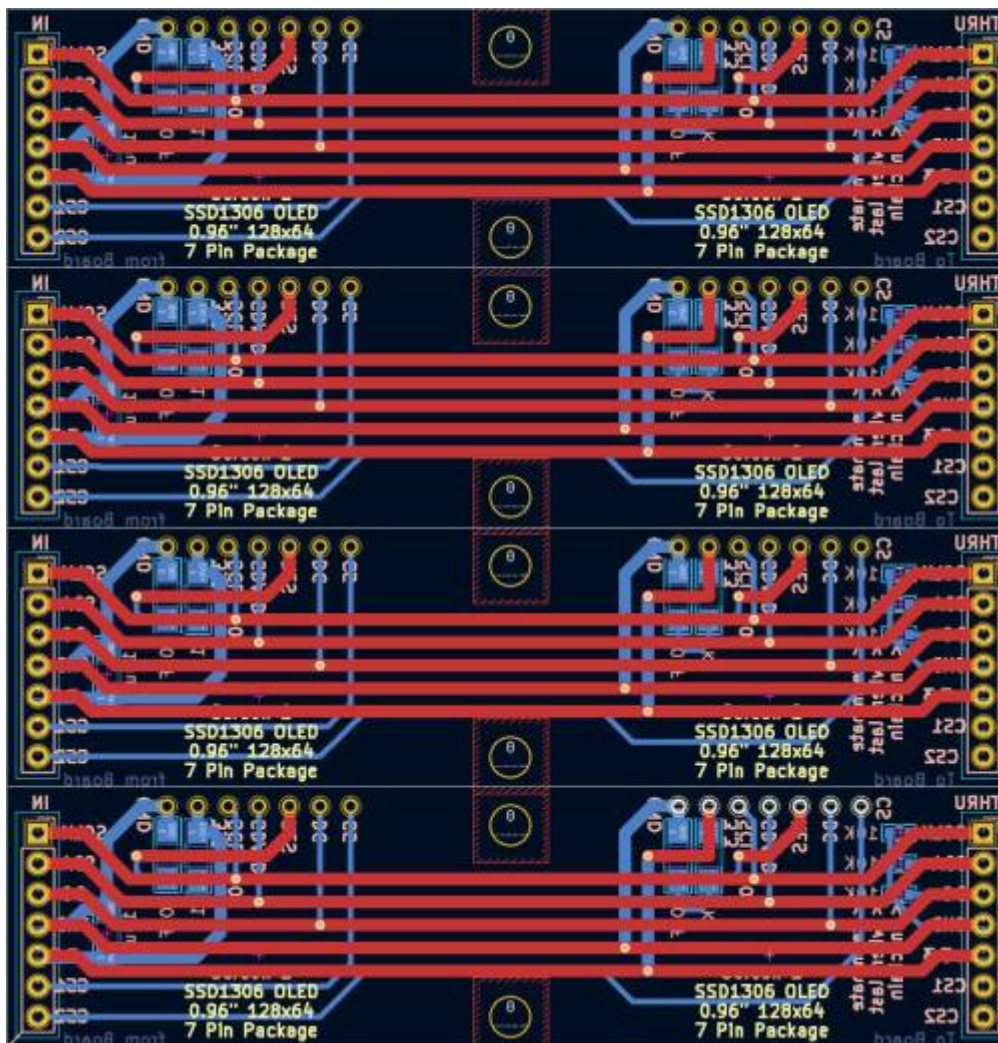


Eurorackpanel;  
 LRE-OLED-BAR & LRE8x2 V2.5 This Design is planned for SMD-LEDs - and Screens, - it only will work for transparent Plates - else it must be adaptet (mor drill holes) designed by Michael Sigl > www.sigl.at



## 4x PCBs on one 100x100mm

there is no V-Groove, you have to cut it on the marking groove it on top and back, with a new sharp cutter, do it several times, then break it



With this Method you pay for 20 PCBs 8€ all inclusive to EU-Austria  
So you can Stuff 5 LRE8x2 with this.  
Here are the gerberfiles for production - testet on JLCPCB  
[lre-oled-reva-gerber.zip](#)

## Hardware Requirements

- a MIOS32 Core to connect too
- Soldering Iron - with a Dip that can Handle Thruhole-Parts, solder Paste...
- LRE8x2 for its nature use

## Schematic

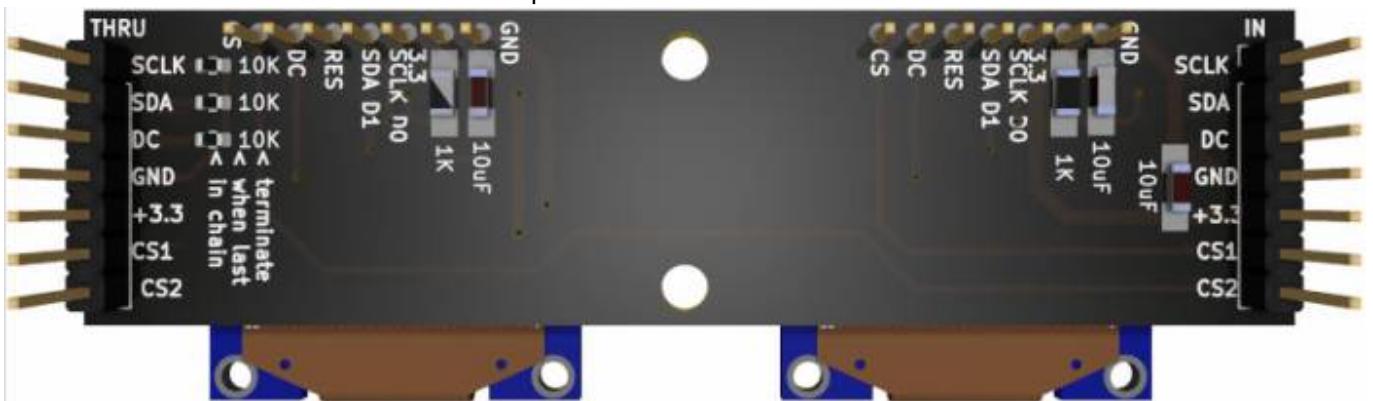


Full Schematic:  
[lre-oled-bar-schematic.pdf](#)

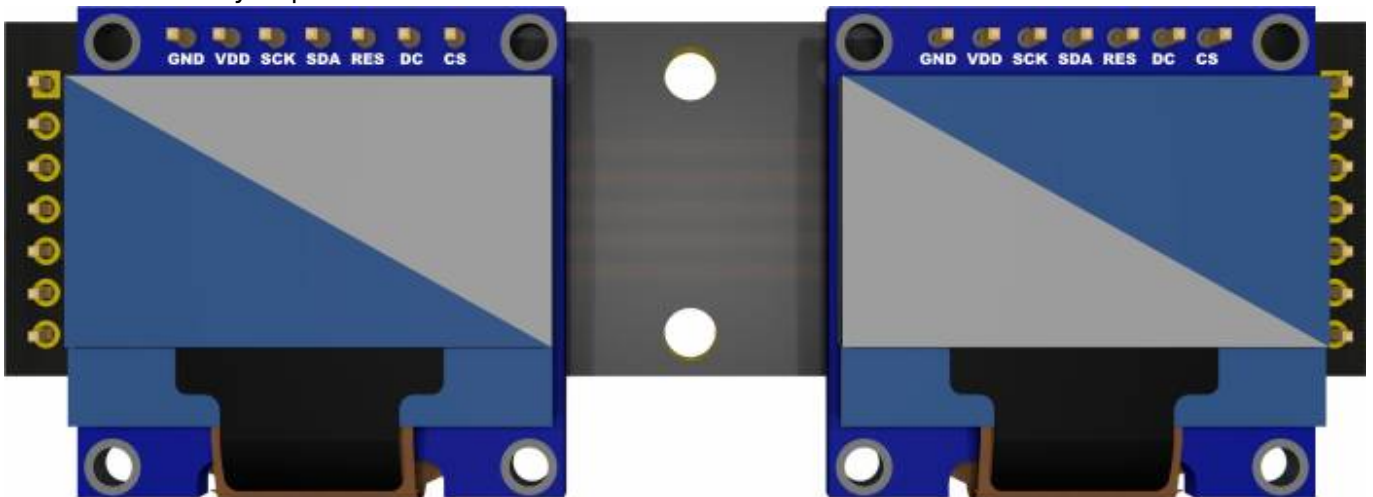
# Building

The Values are printet on the PCB.

- Following Quantity is for 4 PCBs:**
- 8x 1Row 7Pin headers (2.54mm pitch)
- 8x 1K 1208 SMD Resistors
- 12x 10uF 1208 Capacitors (non polarized)
- 8x 0.96" SSD1306 Screens
- 3x 10K 0603 SMD Resistors which are optional



On the Frontside you put in the Screens



# BOM LCSC

these are the parts which must be handsoldered

Comment	Designator	Footprint	LCSC Part Number	Lot
ULN2003ADRW	Q1-Q3	SOIC-18_300mil	C9683	3
PEC11R-4015F-S24	ENC1-ENC5	tht	C143789	5
Micromatch-2x5	LCDi1,LCDo1,Jo89,Jo89	tht	C590954	4
Switch	S1	tht	C273513	1

## To Do

nothing- its the first protypte

## Community users working on it

- **Phatline** = PCB & Schematic, UI-Programming, Documentation...

Just let a Private message on the forum to user already involved.

From:

<https://wiki.midibox.org/> - **MIDIbox**

Permanent link:

<https://wiki.midibox.org/doku.php?id=lre-oled-bar&rev=1642043696>

Last update: **2022/01/13 03:14**

