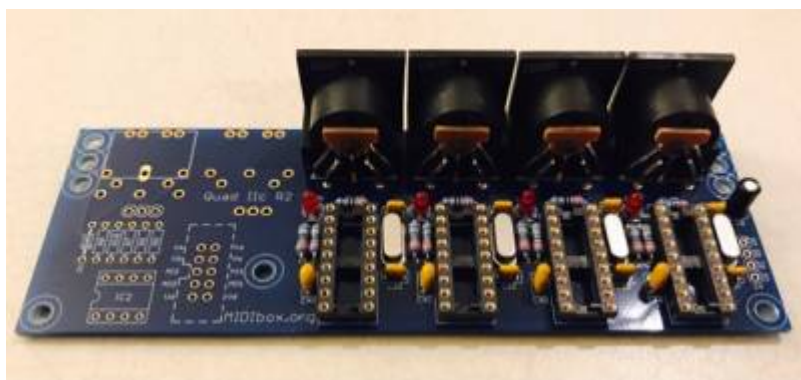


Quad_IIC_MIDI Board parts list



The IIC MIDI module provides a bridge between IIC and MIDI, and mainly consists of a PIC16F88 microcontroller from Microchip, which runs with a special firmware (not MIOS!).

- [Official uCApps Page](#)
- [quad_iicmidi_schem.pdf](#)

Parts List

| Description | Type | Quantity | Reichelt Ref | Mouser Ref | Digikey Ref |
|-------------|------------------------------------|----------|--------------|----------------------|-------------|
| IC1-4 | PIC16F88 | 4 | | 579-PIC16F88-I/P | |
| | IC-Socket for 16F88 | 4 | | 575-199318 | |
| LEDx | 3mm LED red | 4 | | 696-SLX-LX3044HD | |
| Q1x | 20mhz crystal | 4 | | 559-FOXS200-20-LF | |
| C3 | 10µF Electrolytic capacitor | 1 | | 647-UKL1V100KDDANA | |
| C1x,C2x | 15pF Ceramic capacitor "33" | 8 | | 581-SR151A150J | |
| C4x | 100nF=.1µF Ceramic capacitor "104" | 4 | | 598-M20U104M5-F | |
| R2x | 220Ω resistor | 4 | | 660-MF1/4DCT52R2200F | |
| R9x | 220Ω resistor | 4 | | 660-MF1/4DCT52R2200F | |
| R10x | 220Ω resistor | 4 | | 660-MF1/4DCT52R2200F | |
| - | 5 pin DIN connector | 4 | | 502-57PC5FS | |
| J4 | 1x4 pinheader | 1 | | 710-61201021621 | |
| ---- | —optional BLM connection parts— | --- | | | |
| IC2 | 6N138 optocoupler | 1 | | 859-6N138M | |
| IC2 | IC-Socket for 6N138 | 1 | | 575-199308 | |
| R6 | 1KΩ resistor | 1 | | 660-MS1/4DCT52R1001 | |
| R7 | 4.7KΩ resistor | 1 | | 603-MFR-25FBF52-4K7 | |
| R8-R10 | 220Ω resistor | 3 | | | |
| D1 | 1N4148 diode | 1 | | 512-1N4148 | |
| - | 8 pin DIN connector | 1 | | 490-SDF-80J | |
| - | Box Header 2x5 | 1 | | | |

Mouser Parts Cart: <https://www.mouser.com/ProjectManager/ProjectDetail.aspx?AccessID=a9ef9df865>

Datasheets

- [74HC165](#)

From:

<https://wiki.midibox.org/> - **MIDIbox**

Permanent link:

https://wiki.midibox.org/doku.php?id=quad_iic_midi&rev=1521142416

Last update: **2018/03/15 19:33**

