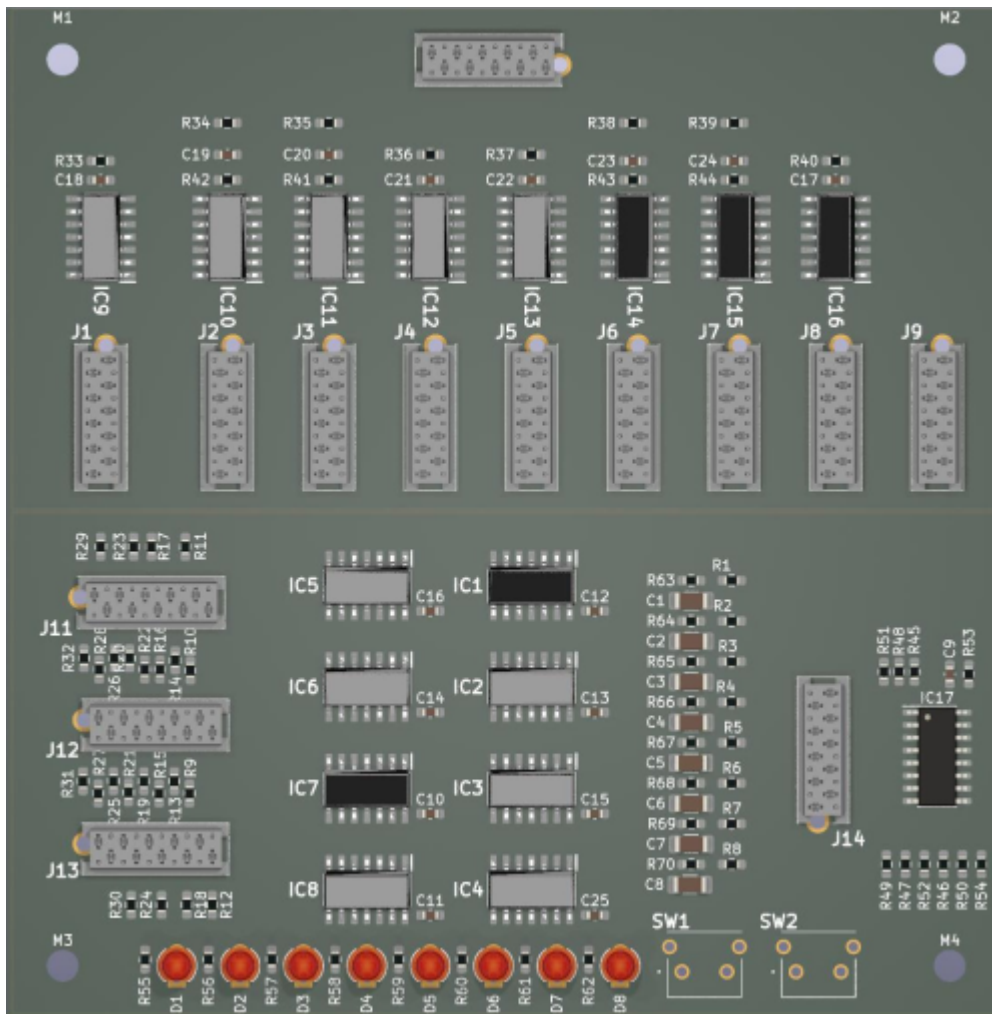


SRIO-ROUTER



- * **Route 1 Userinterface to 8 Cores**
- * **So you save space in your Eurorack**
- * **So you save money**
- * **Route SRIO (J89 aka DIN and DOUT)**
- * **ROUTE 8x OLED Screens**
- * **No Support for AIN**

ready for Pick and Place

-all Parts are presoldered except:

- 2x Switches
- 8x LEDs
- Micromatch Headers

Hardware Requirements

- up to 8 [CV1](#) or other MIOS32 Cores
- Soldering Iron - with a Dip that can Handle Thruhole-Parts, solder Paste...

- dont forget the Micromatch connectors, and Ribbon cables

Schematic

[srio-router-schematic.pdf](#)



Building

The Design is optimized for Pick and Place > all SMD Parts are on the Top-PCB
 The Rest is Thruhole > easy handsolder

now waiting for Presoldered PCBs

BOM

these are the parts which must be handsoldered

14-24x Micromatch Header 2x5p:

Mouser: [571-12150790](#)

Reichelt: [MPE 369-1-010](#)

LCSC: [C590954](#)

14-24 Micromatch Plug 2x5p or even more...:Mouser: [571-1-2178712-0](#)Reichelt: [MPE 372-1-010](#)**2x Tact Switch:**Mouser: [113-DTSA-65N-V](#)Reichelt: [TASTER 3305B](#)**8x 3mm LED Thruhole ca 400mcd:** Mouser: [859-LTL1CHJETNN](#)Reichelt: [EVL 1224-10SURC](#)**Flat-band-Cable - 30m !!! x 40pins...last forever:**Mouser: [617-09180407001](#)**BOM LCSC**

these are the parts which are presoldered by the Pick and Place Machine

| Comment | Designator | Footprint | LCSC Part Number |
|------------|---|-----------|------------------|
| 47uF | C1,C2 | 1206 | C96123 |
| 100nF | C3,C4,C7,C8 | 0805 | C49678 |
| 10uF | C5,C6 | 1206 | C13585 |
| LED-Yellow | Da1,Db1,Dc1,De1,De1-Da19,Db19,Dc19,De19 | 0603 | C72038 |
| 180 | R1-R5 | 0603 | C22828 |
| 1K | R6,R7 | 1206 | C4410 |
| 10k | R8-R25 | 0603 | C25804 |
| 74HC595 | U1-U3 | SOIC-16 | C5947 |
| 74HC165 | U4,U5 | SOIC-16 | C5613 |

+ Ribbon Cables for example (MOUSER):

710-63911015521CAB|1

PART Locations



To Do

Community users working on it

- **Phatline** = PCB & Schematic, UI-Programming, Documentation...

Just let a Private message on the forum to user already involved.

From: <https://wiki.midibox.org/> - **MIDIbox**

Permanent link: <https://wiki.midibox.org/doku.php?id=srio-router&rev=1641623792>

Last update: **2022/01/08 06:36**

