

ssm2164_seppoman pcb - getting started - how to setup

the following informations are take from the midibox forum, its a collection of infos, without the claim to be 100% true, i will try to test the given information.

Power

+ GND -

J5 is obviously the only connector where you could come to the conclusion that it might have something to do with power supply. Just like the:

AOUT(NG), the 2044 board, the MB_FM module etc, **it expects a bipolar power supply of +/- 12 V and GND.**

CV

as a general rule of thumb you can assume that everything that doesn't specifically mention a bipolar control voltage will expect an unipolar CV.

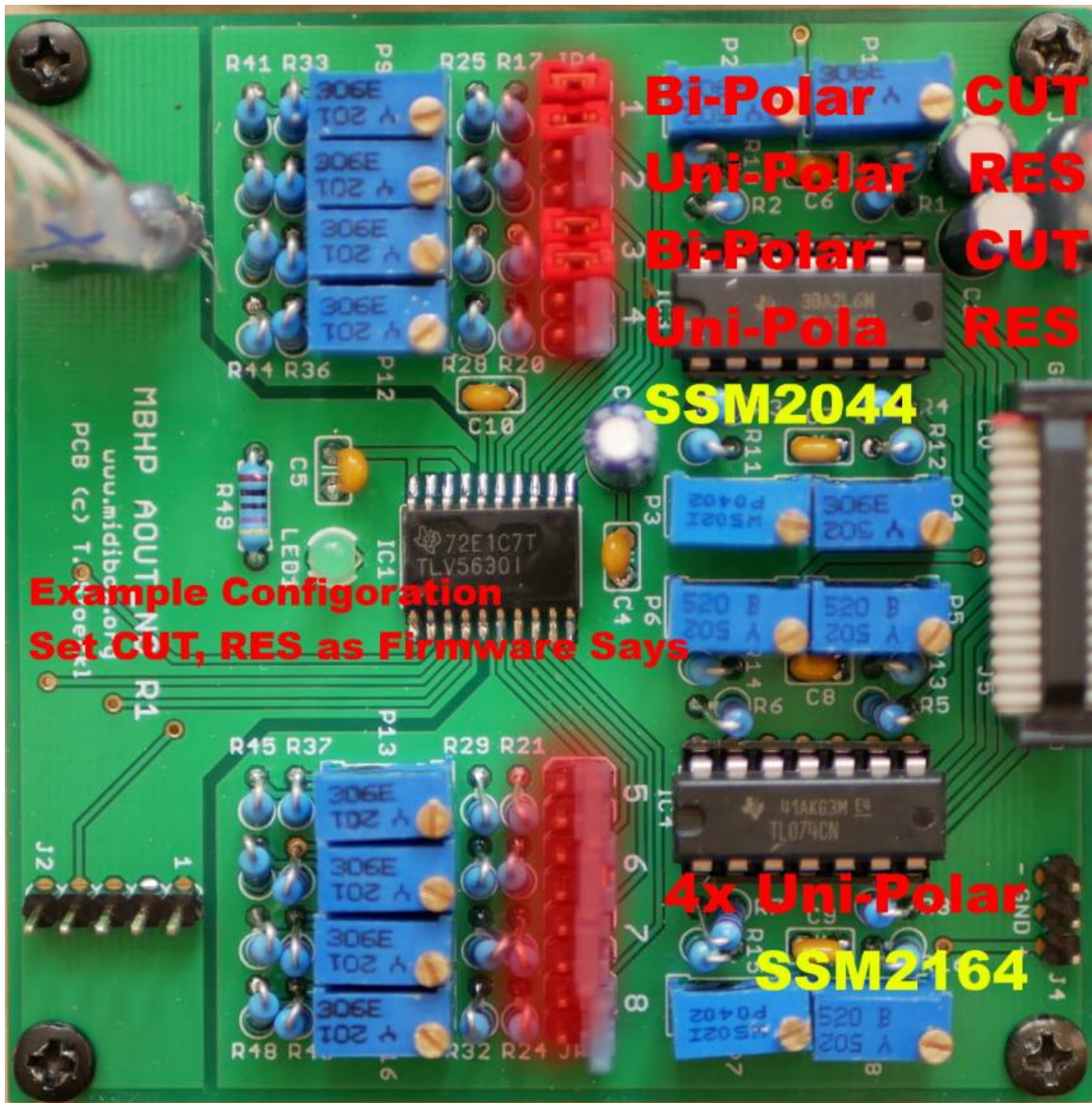
In the case of this module, IIRC the dynamic range of the regular **CV range (0 .. 11.67V)** (uni-polar!) is about 65 dB, with 0V being "silence" and 11.67V being unity gain.

I have never thought about what happens if you apply a negative voltage to the CV input...

Note also that generally a bipolar control voltage (CV) still doesn't mean that there are more than two wires involved, just the one signal can be above or below GND.

AOUT_NG Connect and Setup

Unipolar Jumpering like shown:



AOUT_NG Stuffing Parts PCB

Resistor Solution stock - very low voltage

if you followed [aout_ng](#) built plan you will get following Stock-CV-Voltages @+12V PSU:
Uni-Polar CV-Range: 0-11,4V
Bi-Polar CV-Range: +-3V

SSM2164 & Stock AOUT_NG:

As the SSM2164 is UniPolar, and seppoman designed it as a couple with AOUT_NG. stock is ok

SSM2044 & Stock AOUT_NG:

As the CUT-Off-CV is UniPolar, and seppoman designed it as a couple with AOUT_NG. stock is ok
I guess for proper +/- 5V operation I'll have to try out a few other resistor values on the SSM module, but this will only apply if you're using a different CV source than an AOUT_NG.

If you need more CV-Range: for more distortion, drive, range, or other modules:

if you sum two voltages through two resistors of same value, you'll get $(V1+V2) / 2$ as a result...

Resistor Solution low voltage - seppomans preferred

R9...R16 > 5.6k (only on the channels that are setup for bipolar mode)

+ -3.5V to + -5.8V Bi-Polar calibration range That should be sufficient as a hot fix, isn't too much effort and you'll still have a decent precision when calibrating.

Resistor Solution high voltage

R1...R8 > 10k

R9...R16 > 2.2k (on all channels). (QUESTION WHY ON ALL?)



+9.5V to +22V Uni-Polar calibration-range

+ -2.4V to + -5.5V Bi-Polar calibration-range

Pro: preserve the "just change the jumpers if you need some channel in bipolar mode" thought behind this option.

Con: dramatically increase the calibration range, i.e. exactly calibrating the outputs will get harder because the same angle of turning the pot will have much more impact.

From:

<https://wiki.midibox.org/> - MIDIBOX

Permanent link:

https://wiki.midibox.org/doku.php?id=ssm2164_getting_started&rev=1524488297

Last update: **2018/04/23 12:58**

